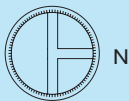
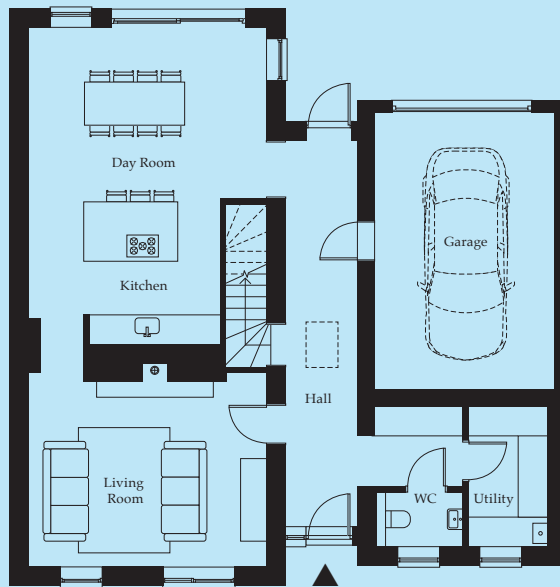
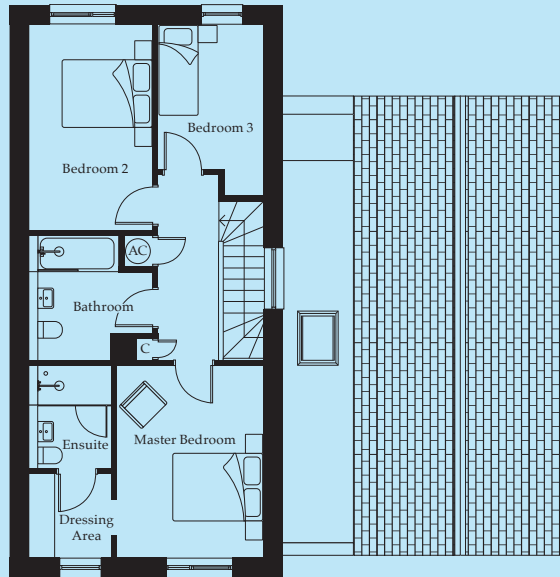


PLOTS 4 & 5 | 3 BEDROOM

# The Cott's



## GROUND FLOOR

Kitchen	4240mm x 3210mm	13'9" x 10'5"
Living Room	5270mm x 4320mm	17'2" x 14'1"
Day Room	5270mm x 3870mm	17'2" x 12'6"
Utility	3100mm x 1750mm	10'2" x 5'7"

## FIRST FLOOR

Master Bedroom	4320mm x 3310mm	14'1" x 10'8"
Bedroom 2	4620mm x 2800mm	15'1" x 9'1"
Bedroom 3	3850mm x 2380mm	12'6" x 7'8"

**TOTAL AREA**

**1,656 sq ft**

AC – Airing Cupboard    C – Cupboard

Floor plans are for approximate measurements only and may not be proportionally scaled to other floor plans shown in this brochure. Dimensions are not intended to be used for items of furniture. Total sq ft has been supplied in line with RICS GIA area guidance.