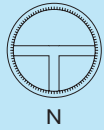
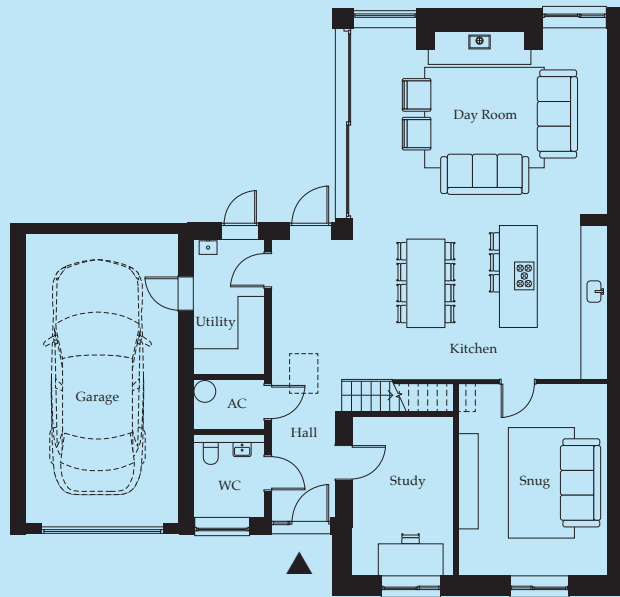
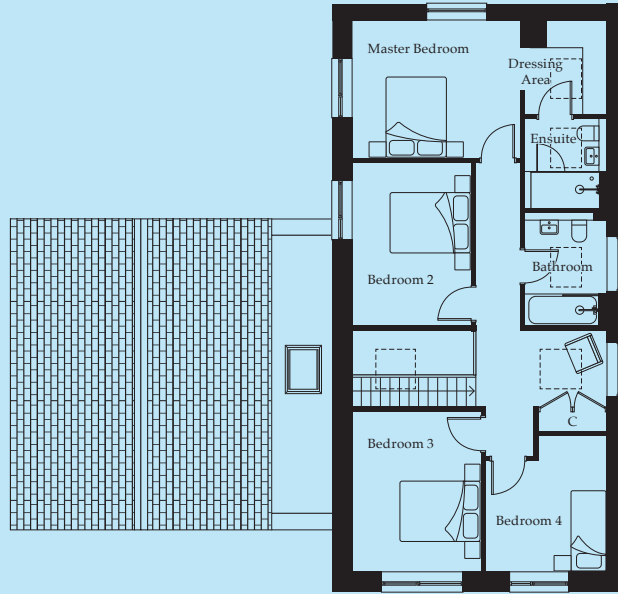


PLOTS 7 & 14 | 4 BEDROOM

The Searle



GROUND FLOOR

Kitchen	6400mm x 3870mm	20'11" x 12'8"
Day Room	6400mm x 4730mm	20'11" x 15'5"
Snug	4800mm x 3750mm	15'7" x 12'3"
Study	4000mm x 2560mm	13'1" x 8'4"
Utility	3400mm x 1800mm	11'1" x 5'9"

FIRST FLOOR

Master Bedroom	4230mm x 3390mm	13'8" x 11'1"
Bedroom 2	4100mm x 3000mm	13'4" x 9'8"
Bedroom 3	4000mm x 3250mm	13'1" x 10'6"
Bedroom 4	3400mm x 3000mm	11'1" x 9'8"

TOTAL AREA

2,102 sq ft

AC – Airing Cupboard C – Cupboard

Floor plans are for approximate measurements only and may not be proportionally scaled to other floor plans shown in this brochure. Dimensions are not intended to be used for items of furniture. Total sq ft has been supplied in line with RICS GIA area guidance.